

Who's New in Madison

January 2018 Newsletter

Please Take Note

Visit our member website at:
www.whosnew.org

Visit our public website is:
www.whosnew.org

Find us on Facebook at:
Who's New in Madison



Table of Contents

President's Corner.....	1
Luncheon Information.....	2 & 3
Service Project.....	4 & 5
Interest Group News.....	6
New Members.....	6
Not Just Wine & Cheese.....	7
Board Members.....	8

Please contact the editor with
any questions or concerns
regarding the newsletter.
Liz Freitick - efreitick@gmail.com,
call 438-2988.

President's Corner

Enjoy the Journey

Every summer, when our two children were growing up, we vacationed in some beautiful parts of the US, usually stopping along the way to visit extended family. Every year we would drive, sometimes, 900 miles, and that would take a good 14 hours. From the back seats of the Suburban, the kids would often ask, "Are we there yet?"

I think it's human to be impatient. We all want to get to that final destination—especially when the end "destination" is something fun and anticipated. Over time, I found that I was also interested in the journey...the precious chance to talk to my husband, listen to music, view the Tennessee mountains and marvel at the Mississippi River as we crossed it multiple times.

Still, one has to have the destination in mind. I remember a story about a farmer pulling a plow behind his tractor and plowing in perfectly straight lines without any "technological aids". His young grandson asked him how he made the rows so perfect...and Grandpa answered, "I pick out a faraway point on the horizon and aim for that point".

All roads lead to nowhere if you don't know where you are going. Throughout "ones" life, my destination has changed multiple times. But the lesson has stayed with me. Keep your eye on the destination and enjoy the journey.

I always find the beginning of a New Year to be refreshing and inspiring. It's a good exercise to set goals and focus on how you will achieve your goals. Life moves at a fast pace, and tomorrow is not guaranteed. We all want to "get to our destination"...but my New Years hope for you is that you each take time to "enjoy the journey".

My Best....Kathy Nelson

Reservation deadline is midnight Friday, December 28, 2018

Go to <https://whosnew.org> to register



January Luncheon

January 10, 2019

11:00 AM Cocktails, 12:00 Noon Luncheon

The Great Dane Pub East

876 Jupiter Drive, Madison, WI 53718

The Dane Wedge

Iceberg, house-smoked turkey, bacon, Roth Case Moody Blue, tomato, radish, cucumber, red onion, green goddess ranch, French bread \$20.75.

Vegetable and Bean Chili

Fire roasted tomato, fresh chilis, pinto, garbanzo & kidney bean, stout + tomato-lime broth, sour cream, Wisconsin sharp cheddar, served on a Demi Baguette \$17.00.

Meatloaf

Meatloaf with garlic mashed potato, caramelized onion-stout gravy, braised spinach, roasted tomato salsa \$ 22.00.

Gluten-free Tara's Cajun Chicken

Blackened chicken, lettuce, tomato, onion, gluten-free bun, side of chipotle mayo, served with a house salad \$19.50.

Dessert

New York Cheesecake served with a mixed berry sauce.
Coffee and tea is Included.

January Luncheon Program

Are you ready for some good ol' fashioned fun? Our program in January takes place at the Great Dane East and will feature some members of Madison Roller Derby (MRD), Madison's premier roller derby league. MRD first laced up its skates for the public in late 2004 and began its first full season in 2005. Since then, the dynamic skaters and dedicated volunteers have been providing a sport that not only features pure athleticism but a punch of serious fun for its many fans. MRD is made up of 4 home teams

- Quad Squad, Unholy Rollers, Reservoir Dolls, Vaudeville Vixens - and 2 interleague teams - Team Unicorn and the Dairyland Dolls. The Dairyland Dolls are currently ranked 38th in the

(Continued on page 3)



(MRD continued from page 2)

world (out of over 500 teams). MRD is a grassroots effort run by an all-volunteer group of skaters and non-skaters. These derby enthusiasts are behind everything, from practices and bouts to merchandise and community involvement.

MRD is considered a “grandmother” league within the Women’s Flat Track Derby Association, having been one of the first five leagues formed when the modern version of the sport and the WFTDA first formed in the early 2000’s. As of 2016, we were officially a 501(c)(3) non-profit organization, with a focus not only on producing high quality sporting events but also on charitable and community outreach, as well as educational opportunities for our league members.

Madison Roller Derby is proud to bring roller derby and the roller derby community to Madison. We love our sport, and we love sharing it with new groups! For more information on ways to get involved, please contact: media@madisonrollerderby.org

Meeting Highlights and Announcements

Board of Directors Meeting (Dec. 4)

- Nominating committee must be named by the end of December. We need 3 members from the general membership. Contact Kathy Nelson or Paula Primm if you can serve.
- We have 3 new IG’s beginning to form
- The club has 556 members, 13 new since last month.
- Language to state a “no refund” policy of membership fees to be drafted and brought to next BOD meeting (February).
- The Long term Financial Strategy special committee will be chaired by Nancy Gunder and a report out will redone in April.

To see minutes of past board meetings, go to the Who’s New website and use the Quick Menu to find “Board Minutes.”

November Luncheon

- There were 81 in attendance; 5 new members and 1 guest.
- Our speaker on “Restorative Justice Program” was very informative.
- Members brought gifts for 39 children and 60 plus general gifts for children associated with our service project, MUM.
- Members were encouraged to order baked goods from “Just Bakery” (MUM) for their holidays.

If you’d like to submit a sentence, a paragraph(s) or an article on “What WNIM means to you” for publishing in future WNIM newsletter, please send them to:
Liz Freitick - efreitick@gmail.com or
Kathy Nelson - katnels59@gmail.com



***A Celebration of Life Service for Lu Grieg will be held
on Saturday, January 5th at 2:00 pm
at the Lussier Family Heritage Center,
3101 Lake Farm Road, Monona, WI, 53711***



Madison–Area Urban Ministry

Another one of MUM's umbrella charities is The Beacon, which is a day shelter that opened one year ago. The Beacon is where homeless people can spend time indoors from 8:00 am to 5:00 pm, seven days a week. They provide showers, laundry, lunch, and other services. They also work at moving homeless clients to housing. Since its opening, The Beacon has averaged about 200 people per day at the shelter.



Our request for *January Luncheon Donations* is for men's and women's underwear. If you're familiar at all with clothing available at charitable distribution centers, underwear is always in short supply. The Beacon does distribute clothing when it's available. We're looking for men's boxer briefs, all sizes and women's underwear, all sizes. Any donation is greatly appreciated by The Beacon and especially by the people at the shelter!

Any donation is greatly appreciated by The Beacon and especially by the people at the shelter!



Just Bakery items were available for purchase at our December luncheon. All kinds of delicious cookies, breads, muffins, brownies, etc. were available for holiday entertaining and giving! MUM's Just Bakery is a 16-week educational and vocational training program. Members' purchases help raise money for Just Bakery and their students. All proceeds from Just Bakery sales are reinvested in the program. We'll update you in the February newsletter on how much we raised!

Remember, you can order year round! For more information, go to:

www.emum.org/what-we-do/justbakery

The Giving Tree

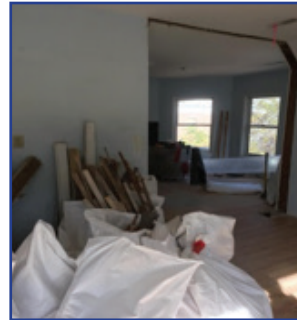
Once again, 53 Who's New members showed their kind hearts and generosity by donating 97 gifts to the children of MUM's Family and Mentoring Connection. This program provides a variety of opportunities to maintain and strengthen relationships within families affected by incarceration.



The gifts were brought to Nakoma in December and helped adorn their festive entry way, with MUM staff picking them up after lunch. Thank you very much to our members for all the wonderful gifts you provided for the children to make their holidays brighter!

Healing House Update

Thanks to generous community support, Healing House is moving forward to opening in Spring 2019.



Community supporters gathered outside Healing House on November 12th to welcome the Graduate Crew of Operation Fresh Start as they begin the renovations on Healing House. County Executive, Joe Parisi, Belinda Richardson from The Road Home, Sweeney Construction, Eldonna Hazen, and individuals from Operation Fresh Start spoke of the need for Healing House in our community.



Also, we recently dropped off our official placement agreement with the Edgewood School of Nursing. This will partner nursing students and Healing House staff in a learning opportunity and collaboration to help care for and support our future patient/residents!

Stay posted for the announcement of our grand opening!

The Service Project Committee will be collecting personal care items for Healing House at our February lunch. A more detailed list will be available in the next newsletter!

Recycle

Bring your used, empty ink cartridges to the luncheon. One of the many deserving organizations the service committee researched this year was Mindset, Inc. It is a non-profit organization dedicated to building healthier minds and more fulfilled lives. They offer free mental wellness education, tools and resources to all Dane County residents. One source of funding for them comes from recycling old ink cartridges. They will accept any brands and sizes of empty inkjet or toner cartridges. Questions? Contact Service Project chair/committee members.

Interest Groups News

Who's New Winter Pickleball

Who's New will have two women's pickleball leagues this winter. We play at Hitter's Sportsplex, 3170 Deming Way in Middleton.

The Monday session meets from noon until 2:00 PM from January 14–April 1. The Thursday session meets from 10:00 AM until noon from January–April 4.

You must sign up by December 16 if you wish to play. Please contact Debbie Wise - dwise52@charter.net, or 608-332-6697 if you have any questions about our daytime women's pickleball groups. If you cannot play as a regular there are opportunities to be a substitute.



NEW!!! Weekend Co-ed Pickleball

We will have a trial weekend pickleball outing to see if there would be enough interest to start regular interest group. We will meet on Sunday, January 20, 2019, 6:30-9:00 PM at Hitter's Sportsplex, 3170 Deming Way in Middleton.

The cost will be approximately \$7 per person (exact amount to be determined given participation). This group is open to singles and spouses of Who's New members. If you are interested in attending, or have any questions, please contact Debbie Wise, dwise52@charter.net or 608-332-6697. You must sign up no later than January 10, 2019 so I can make sure we can reserve courts.

Dog Walkers Wanted

Donna Cangelosi would like some human company on walks with her dog Allie, a 5-year-old, 50-pound Border Collie mix, and has an idea for a walking group for women and their dogs.

Donna and Allie are open to ideas about when and where, but suggest some of the Madison area's great dog parks. If you are interested, please contact Donna at 608 287-4703 or dvc7258@gmail.com.

Dining IN

Candie Lutz has a tasty idea for a new group for those who love to cook...but are less enthusiastic about shopping for, prepping, cooking, and eating that lovely dish alone. She's named this group "Dining IN". She is open to ideas about time and place. If you are interested in creating a dining opportunity with Candie and her friends, contact her at candie.lutz@gmail.com or 847 345-2951.

Welcome New Members to WNIM

Judy Wait
Stacy Gannon
Sue Friedman
Barbara Peterson

Mary Kinsley
Judy Cardin
Susan Cambria
Julie Beyer-Fitzgerald

Patti Witt
Sue Shirmulis
Valerie Hoch

✓ Check website directory for more details on new members.

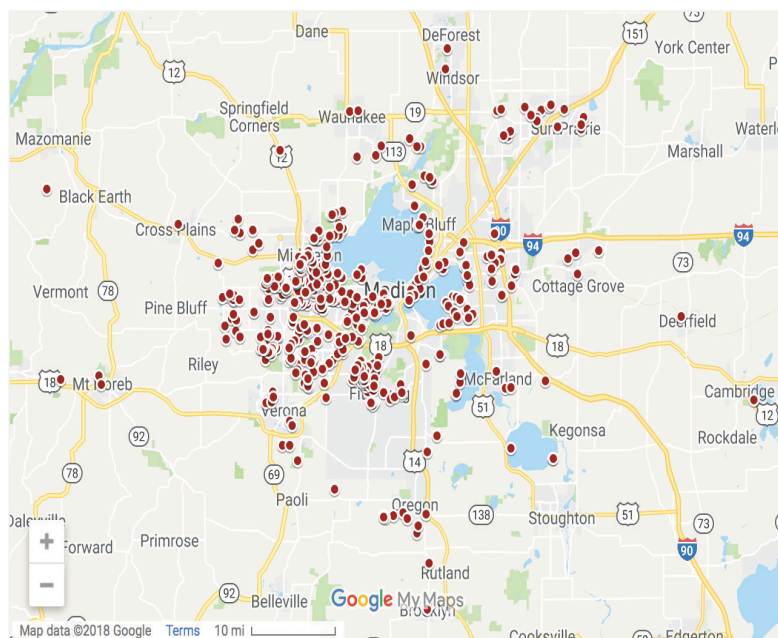
Thank You

Special thanks to Jennifer Allen, who shared her amazing photography talent and beautiful cards with us at the December luncheon! Jennifer donates all the proceeds from the sales of her artwork to the Service Project each year!

Another Who's New member created a lovely holiday quilt for us to auction off! While this member wished to remain anonymous, we want to give her a big 'thank you' for helping us raise money for Healing House!

Website Update

The member map is now available on the website <http://whosnew.org>. After logging in, click on the "Member Home Page" tab and under "Club Information" you will see "Member Map". Click on it and an interactive google map will appear with a dot for every member's home address. The best part is that you can click on any dot and that member's information will display. Zoom in to see your neighborhood (plus button in the lower left corner) or zoom out to see members who live further out.



Who's New In Madison

Not Just Wine & Cheese

Friday, January, 18, 7:00 PM -9:30 PM

Hosted by Dawn and Tom Curatolo

**4021 Monona Drive
Monona, WI 53716**

**RSVP: (331) 643-9620 or
Dcurt18@hotmail.com**

Not Just Wine & Cheese is a monthly social event for all members. Singles, couples, everyone is welcome. Please bring an appetizer/dessert to share and your own beverages. We look forward to seeing you.

What does the Who's New Board of Directors talk about each month?

You can find out by reading the minutes of our board meetings, which are available on our website. Use the Quick Menu to find the "Board Minutes" tab; or from the Members Homepage, scroll down to Board Meeting Minutes in the Club Information section. Your WN Board members welcome your input and ideas on any of the matters that we discuss – contact any of us to let us know your thoughts.

Who's New Board Members 2018 - 2019

Executive Board

President

Kathy Nelson, 269-208-8257
katnels59@gmail.com

Vice President

Paula Primm, 404-229-7455
paulalprimm@gmail.com

Secretary

Betty Cohen, 617-447-5412
bettycohen3@gmail.com

Treasurer

Ann Crabb, 848-4662
crabb715@gmail.com

Committee Members

Hostess

Debbie Snyder, 318-1764
debsny1@gmail.com

Committee:

Jan Miller, Sue Madson,
Luise Beringer

Publicity/Archives

Carol Carnine, 833-9642
carolcar9@yahoo.com

Luncheons

Barbara Foster, 608-203-8010
foster8434@prodigy.net

Committee:

Debbie Wallace, Belinda Wilson,
Katie Heling, Deb Riederer

Membership/Directory

Judy Walahoski, 515-238-4792
judewalahoski@gmail.com

Denise Cariski

dmcaris@sbcglobal.net

New Member Coffee/Cocktail

Kathy Condit, 241-2666
kathycondit@yahoo.com

Committee:

Diane Higby, Janet Pawelski,
Karen Watson-Newlin, Sue
Bishop

Newsletter

Liz Freitick, 438-2988
efreitick@gmail.com

Website:

Mary Lindstrom, 217-5044
mary.jth@gmail.com

Committee:

Debbie Wise, Barb Foster,
Kathy Condit, Judy Walahoski

Programs

Gail Green, 509-6214
gailkgreen@gmail.com

Pam Benish, 756-9283
pbenish625@gmail.com

Marge Kostichka, 715-340-2577
mkostichka52@gmail.com

Service Project

Diane Wiersema, 837-3080
dutch5@charter.net

Sue Ciurczak, 467-2267
sjvacurczak@gmail.com

Committee:

Patti Bavlnka, Genevieve
Murtaugh, Nicola Davis

Past President

Peg O'Donoghue, 217-649-7210
pegodonoghue@gmail.com

If you have a change of address or email or phone number, please contact Membership and Directory. For a copy of the Who's New Board Minutes, contact the Secretary.